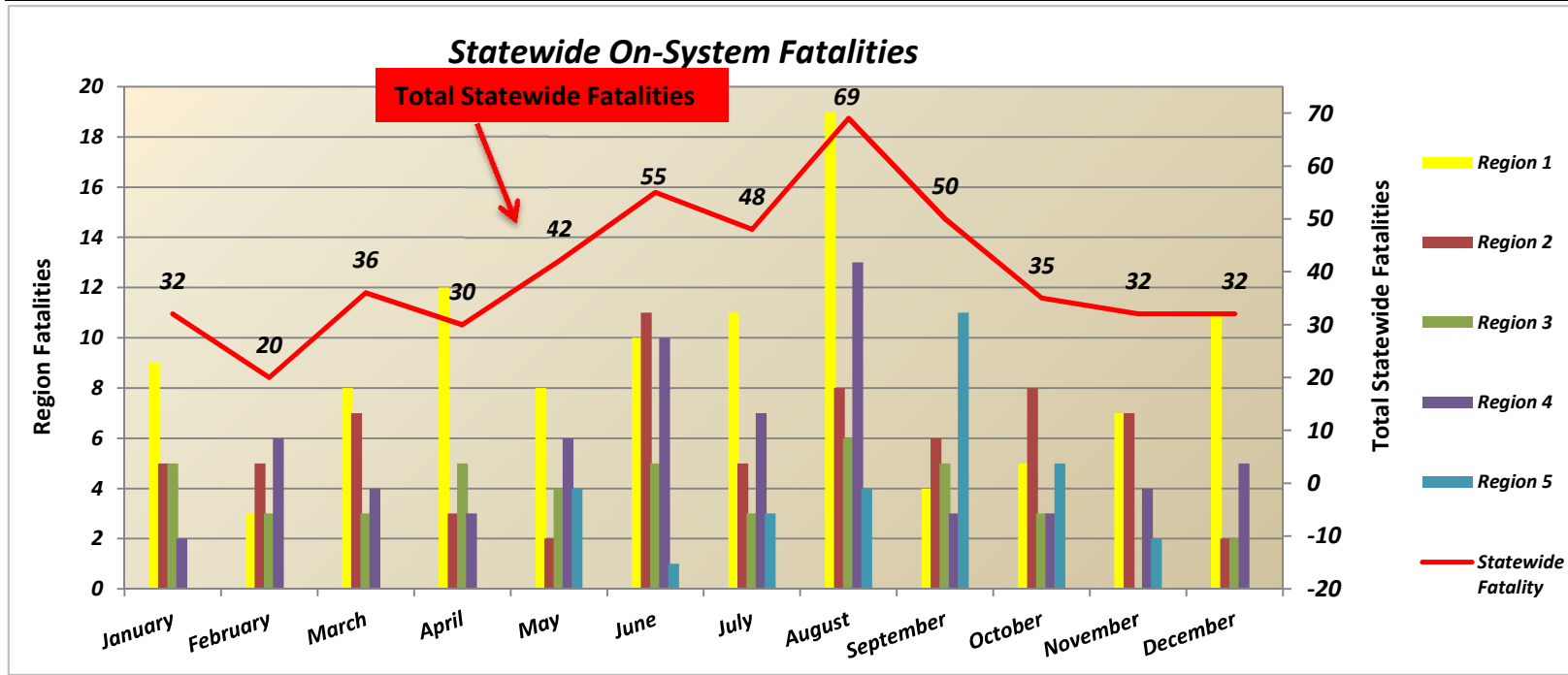


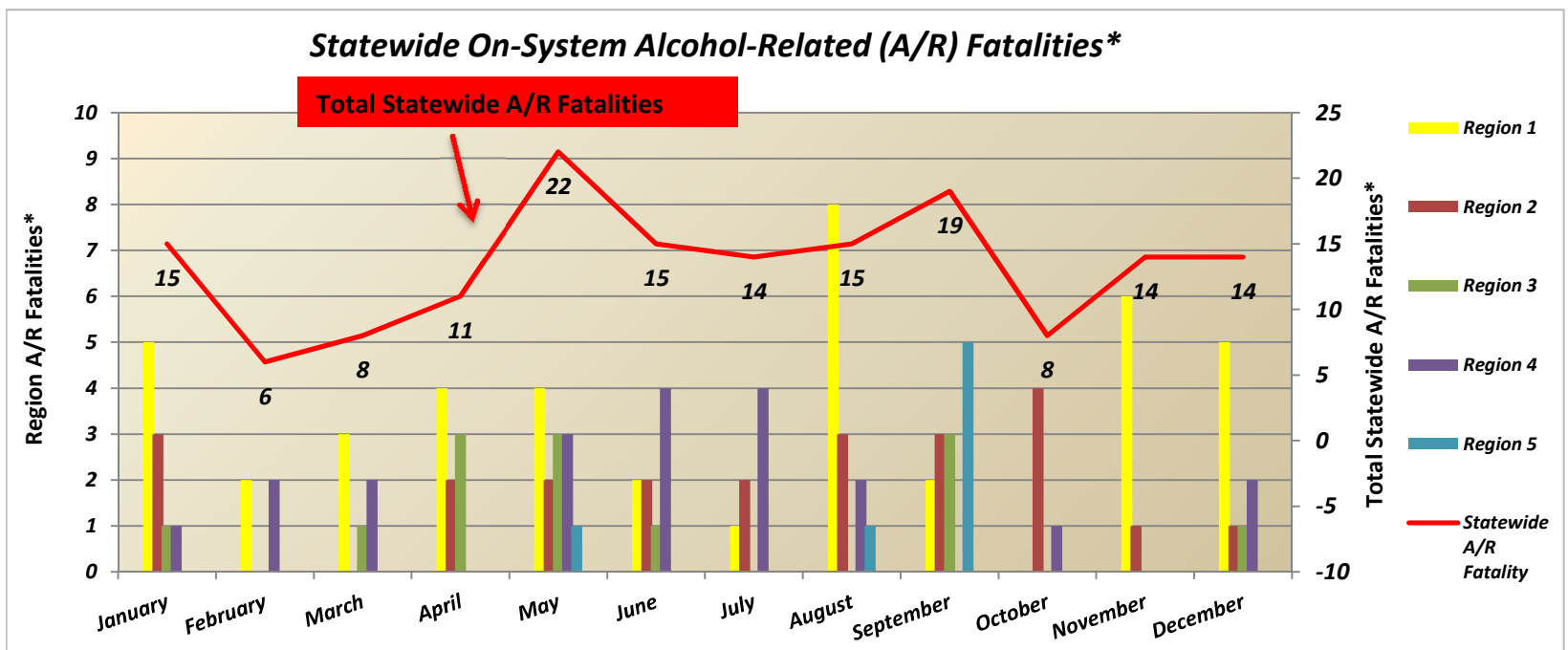
2013 Fatalities

Statewide Fatalities											
Crash Month	Region 1		Region 2		Region 3		Region 4		Region 5		Statewide Fatalities
	On-System	Off-System	On-System	Off-System	On-System	Off-System	On-System	Off-System	On-System	Off-System	
January	9	2	5	4	5	1	2	4	0	0	32
February	3	1	5	2	3	0	6	0	0	0	20
March	8	9	7	3	3	1	4	1	0	0	36
April	12	2	3	3	5	0	3	2	0	0	30
May	8	6	2	8	4	2	6	0	4	2	42
June	10	10	11	5	5	0	10	2	1	1	55
July	11	1	5	11	3	1	7	3	3	3	48
August	19	6	8	5	6	1	13	6	4	1	69
September	4	7	6	6	5	2	3	6	11	0	50
October	5	4	8	0	3	1	3	5	5	1	35
November	7	4	7	2	0	1	4	5	2	0	32
December	11	8	2	1	2	1	5	2	0	0	32
Total	107	60	69	50	44	11	66	36	30	8	481



2013 Fatalities

Statewide Alcohol Related (A/R) Fatalities*											
Crash Month	Region 1		Region 2		Region 3		Region 4		Region 5		Statewide A/R Fatalities
	On-System	Off-System	On-System	Off-System	On-System	Off-System	On-System	Off-System	On-System	Off-System	
January	5	0	3	4	1	0	1	1	0	0	15
February	2	1	0	1	0	0	2	0	0	0	6
March	3	1	0	1	1	0	2	0	0	0	8
April	4	1	2	1	3	0	0	0	0	0	11
May	4	3	2	3	3	1	3	0	1	2	22
June	2	2	2	4	1	0	4	0	0	0	15
July	1	1	2	6	0	0	4	0	0	0	14
August	8	0	3	0	0	0	2	0	1	1	15
September	2	1	3	2	3	1	0	2	5	0	19
October	0	2	4	0	0	0	1	0	0	1	8
November	6	2	1	2	0	1	0	2	0	0	14
December	5	4	1	0	1	0	2	1	0	0	14
Total	42	18	23	24	13	3	21	6	7	4	161



*Preliminary (as of the date of this Report, subject to confirmation by Toxicology Report by the State's Coroners)