

# STATE OF COLORADO

---



**DEPARTMENT OF TRANSPORTATION**  
**Contracts and Market Analysis Branch**  
4201 East Arkansas Avenue, 4<sup>th</sup> Floor  
Denver, Colorado 80222  
(303) 757-9736

March 2011

## COLORADO CONSTRUCTION COST INDEX REPORT Calendar Year 2010 Fourth Quarter

Prepared by  
Gus Bieber  
Engineering Estimates and Market Analysis Unit of  
Contracts and Market Analysis Branch

Prepared for  
Pamela Hutton, Chief Engineer

# STATE OF COLORADO



**DEPARTMENT OF TRANSPORTATION**  
**Contracts and Market Analysis Branch**  
4201 East Arkansas Avenue, 4<sup>th</sup> Floor  
Denver, Colorado 80222  
(303) 757-9736

## SUMMARY

### CONSTRUCTION COST INDEX FOR SELECTED HIGHWAY CONSTRUCTION ITEMS

4<sup>th</sup> QUARTER ENDING December 31, 2010

Index for this quarter.....	264.5
Index for last quarter.....	270.8
Point change from last quarter.....	- 6.3
Percentage change from last quarter.....	-2.33%
Index for same quarter of last year.....	279.5
Point change from same quarter last year.....	- 15
Percentage change from this quarter last year.....	-5.3%
4-quarter moving average.....	271.3

Average number of bidders this quarter.....	5.36
Change in number of bidders from last quarter.....	+12.8%

NOTE: All information shown in this publication was assembled using 1987 as the base year.

Comments:

This Colorado Construction Cost Index is composed of six indicator items and based on bid prices relative to the unit prices of 1987 (unit index=100). The Index varies due to type and location of projects in addition to overall economic conditions.

Earthwork (Excavation and Embankment):

The average price was \$8.52 a cu. yd. which is down \$.78 from the previous quarter.

Hot Mix Asphalt:

The average price was \$64.69 a ton which is up \$5.20 from the previous quarter.

Concrete Pavement:

The average price was \$32.63 a sq. yd. which is down \$15.59 per sq. yd. from the previous quarter.

Structural Steel:

There was no structural steel placed this quarter or last quarter

Structural Concrete:

The average price was \$395.91 a cu. yd. which is down \$32.38 from the previous quarter.

Reinforcing Steel:

The average price was \$.76 a LB which is down \$0.15 from the previous quarter.

HMA prices were up this last quarter. The primary cause for the increase was an increase in oil prices. The other categories decreased this quarter due to competition and recessed economy.

**Summary Report for all the projects awarded betwee 10/31/2010 And 12/31/2010**

<i>Project Amount</i>	<i>No. of Projects</i>	<i>No. of Bidders</i>	<i>Total Contract Amt.</i>	<i>Avg. # of Bids</i>
<i>\$0.00 to \$49,999.99</i>	0			
<i>\$50,000.00 to \$99,999.99</i>	0			
<i>\$100,000.00 to \$249,999.99</i>	0			
<i>\$250,000.00 to \$499,999.99</i>	1	3	\$258,674.50	3.0
<i>\$500,000.00 to \$999,999.99</i>	2	9	\$1,860,916.34	4.5
<i>1,000,000.00 to \$2,499,999.99</i>	1	3	\$1,609,873.35	3.0
<i>2,500,000.00 to \$4,999,999.99</i>	4	23	\$13,192,757.00	5.8
<i>5,000,000.00 to \$9,999,999.99</i>	3	21	\$21,330,959.30	7.0
<i>10,000,000.00 to \$19,999,999.99</i>	0			
<i>20,000,000.00 to \$49,499,999.99</i>	0			
<i>50,000,000.00 or Greater</i>	0			

<b>Total</b>	11	59	\$38,253,180.49
--------------	----	----	-----------------

The number of bidders on all projects awards during this period averaged 5.36 bidders per contract.  
 Average cost per project is \$3,477,561.86 (avg. cci 1994=118.8 / avg. cci 1998 =158.1) in 1994 dollars.

**Summary Report for all the projects awarded betwee 1/1/2010 And 12/31/2010**

<i>Project Amount</i>	<i>No. of Projects</i>	<i>No. of Bidders</i>	<i>Total Contract Amt.</i>	<i>Avg. # of Bids</i>
<i>\$0.00 to \$49,999.99</i>	0			
<i>\$50,000.00 to \$99,999.99</i>	2	8	\$139,278.48	4.0
<i>\$100,000.00 to \$249,999.99</i>	11	45	\$2,115,738.90	4.1
<i>\$250,000.00 to \$499,999.99</i>	24	138	\$8,692,644.50	5.8
<i>\$500,000.00 to \$999,999.99</i>	25	133	\$17,778,044.28	5.3
<i>1,000,000.00 to \$2,499,999.99</i>	19	88	\$33,616,680.71	4.6
<i>2,500,000.00 to \$4,999,999.99</i>	23	118	\$83,655,484.29	5.1
<i>5,000,000.00 to \$9,999,999.99</i>	12	75	\$80,618,685.75	6.3
<i>10,000,000.00 to \$19,999,999.99</i>	3	16	\$43,875,299.54	5.3
<i>20,000,000.00 to \$49,499,999.99</i>	1	6	\$20,293,515.37	6.0
<i>50,000,000.00 or Greater</i>	0			

<b>Total</b>	<b>120</b>	<b>627</b>	<b>\$290,785,371.82</b>
--------------	------------	------------	-------------------------

The number of bidders on all projects awards during this period averaged 5.23 bidders per contract.  
 Average cost per project is \$2,423,211.43 (avg. cci 1994=118.8 / avg. cci 1998 =158.1) in 1994 dollars.

## CCI ITEMS USED FROM 10/31/2010 TO 12/31/2010

ITEM CODE	# OF ITEM	QUANTITY	PRICE	UNIT PRICE	INDEX
203-00000 To 203-00060 203-00062 To 203-00210 203-00400 To 203-00500 203-01020 To 203-01030 209-00000 To 209-00050	18	English (CY) 231,244.00	\$1,969,461.80	\$8.52	
	0	Metric (CM) 0.00	\$0.00	\$0.00	
<b>UNCLASSIFIED EXCAV (CIP)</b>	<b>18</b>	<b>231,244.00<sup>CY</sup></b>	<b>\$1,969,461.80</b>	<b>\$8.52</b>	<b>344.7</b>
403-00720, 403-01000, 403-01010, 403-02000, 403-09121 To 403-09500 403-31300 To 403 36447 403-91401 To 403-95353 411-03100 To 411-03355 411-10010 To 411-90010 (Gal/Lit) Gallon & Liter are converted to Ton	50	English (TON) 205,731.91	\$13,308,454.91	\$64.69	
	0	Metric (MT) 0.00	\$0.00	\$0.00	
<b>HOT MIX ASPHALT (H A)</b>	<b>50</b>	<b>205,731.91 T</b>	<b>\$13,308,454.91</b>	<b>\$64.69</b>	<b>279.6</b>
412-00000 To 412-00050 412-00700 To 412-01352 412-03000 To 412-03000	7	English (SY) 121,483.63	\$3,964,523.00	\$32.63	
	0	Metric (SM) 0.00	\$0.00	\$0.00	
<b>CONCRETE PAVEMENT (9")</b>	<b>7</b>	<b>121,483.63<sup>SY</sup></b>	<b>\$3,964,523.00</b>	<b>\$32.63</b>	<b>244.3</b>
<b>SURFACING TOTAL INDEX</b>					<b>275.6</b>
509-00000 To 509-00000	0	English (LB) 0.00	\$0.00	\$0.00	
	0	Metric (KG) 0.00	\$0.00	\$0.00	
<b>STRUCTURAL STEEL</b>	<b>0</b>	<b>0.00<sup>LB</sup></b>	<b>\$0.00</b>	<b>\$0.00</b>	<b>0.0</b>
601-01022 To 601-01022 601-01030 To 601-01060 601-03030 To 601-05064	11	English (CY) 4,967.10	\$1,966,542.50	\$395.91	
	0	Metric (CM) 0.00	\$0.00	\$0.00	
<b>STRUCTURAL CONCRETE</b>	<b>11</b>	<b>4,967.10<sup>CY</sup></b>	<b>\$1,966,542.50</b>	<b>\$395.91</b>	<b>182.2</b>
602-00000 To 602-00000 602-00020 To 602-00020	13	English (LB) 804,199.00	\$614,279.24	\$0.76	
	0	Metric (KG) 0.00	\$0.00	\$0.00	
<b>REINFORCING STEEL</b>	<b>13</b>	<b>804,199.00<sup>LB</sup></b>	<b>\$614,279.24</b>	<b>\$0.76</b>	<b>186.3</b>
<b>STRUCTURAL TOTAL INDEX</b>					<b>183.2</b>
<b>COMPOSITE INDEX =</b>					<b>264.5</b>

Sum of the 6 categories cost = \$21,823,261.45

HBP Unit Price per CY = \$128.08

Concrete Pavement Unit Price per CY = \$130.54

**CCI ITEMS USED FROM 1/1/2010 TO 12/31/2010**

ITEM CODE	# OF ITEM	QUANTITY	PRICE	UNIT PRICE	INDEX
203-00000 To 203-00060 203-00062 To 203-00210 203-00400 To 203-00500 203-01020 To 203-01030 209-00000 To 209-00050	241	English (CY) 3,570,232.20	\$28,079,628.76	\$7.86	
	0	Metric (CM) 0.00	\$0.00	\$0.00	
<b>UNCLASSIFIED EXCAV (CIP)</b>	<b>241</b>	<b>3,570,232.20<sup>CY</sup></b>	<b>\$28,079,628.76</b>	<b>\$7.86</b>	<b>318.3</b>
403-00720, 403-01000, 403-01010, 403-02000, 403-09121 To 403-09500 403-31300 To 403 36447 403-91401 To 403-95353 411-03100 To 411-03355 411-10010 To 411-90010 (Gal/Lit) Gallon & Liter are converted to Ton	629	English (TON) 3,645,018.39	\$225,711,780.72	\$61.92	
	0	Metric (MT) 0.00	\$0.00	\$0.00	
<b>HOT MIX ASPHALT (H A)</b>	<b>629</b>	<b>3,645,018.39<sup>T</sup></b>	<b>\$225,711,780.72</b>	<b>\$61.92</b>	<b>267.9</b>
412-00000 To 412-00050 412-00700 To 412-01352 412-03000 To 412-03000	73	English (SY) 1,622,489.01	\$47,368,097.30	\$29.19	
	0	Metric (SM) 0.00	\$0.00	\$0.00	
<b>CONCRETE PAVEMENT (9")</b>	<b>73</b>	<b>1,622,489.01<sup>SY</sup></b>	<b>\$47,368,097.30</b>	<b>\$29.19</b>	<b>218.5</b>
<b>SURFACING TOTAL INDEX</b>					<b>262.2</b>
509-00000 To 509-00000	7	English (LB) 475,340.00	\$1,080,348.50	\$2.27	
	0	Metric (KG) 0.00	\$0.00	\$0.00	
<b>STRUCTURAL STEEL</b>	<b>7</b>	<b>475,340.00<sup>LB</sup></b>	<b>\$1,080,348.50</b>	<b>\$2.27</b>	<b>266.4</b>
601-01022 To 601-01022 601-01030 To 601-01060 601-03030 To 601-05064	132	English (CY) 49,842.10	\$21,474,182.48	\$430.84	
	0	Metric (CM) 0.00	\$0.00	\$0.00	
<b>STRUCTURAL CONCRETE</b>	<b>132</b>	<b>49,842.10<sup>CY</sup></b>	<b>\$21,474,182.48</b>	<b>\$430.84</b>	<b>198.3</b>
602-00000 To 602-00000 602-00020 To 602-00020	132	English (LB) 8,144,839.40	\$6,363,335.00	\$0.78	
	0	Metric (KG) 0.00	\$0.00	\$0.00	
<b>REINFORCING STEEL</b>	<b>132</b>	<b>8,144,839.40<sup>LB</sup></b>	<b>\$6,363,335.00</b>	<b>\$0.78</b>	<b>190.6</b>

**STRUCTURAL TOTAL INDEX 210.6**

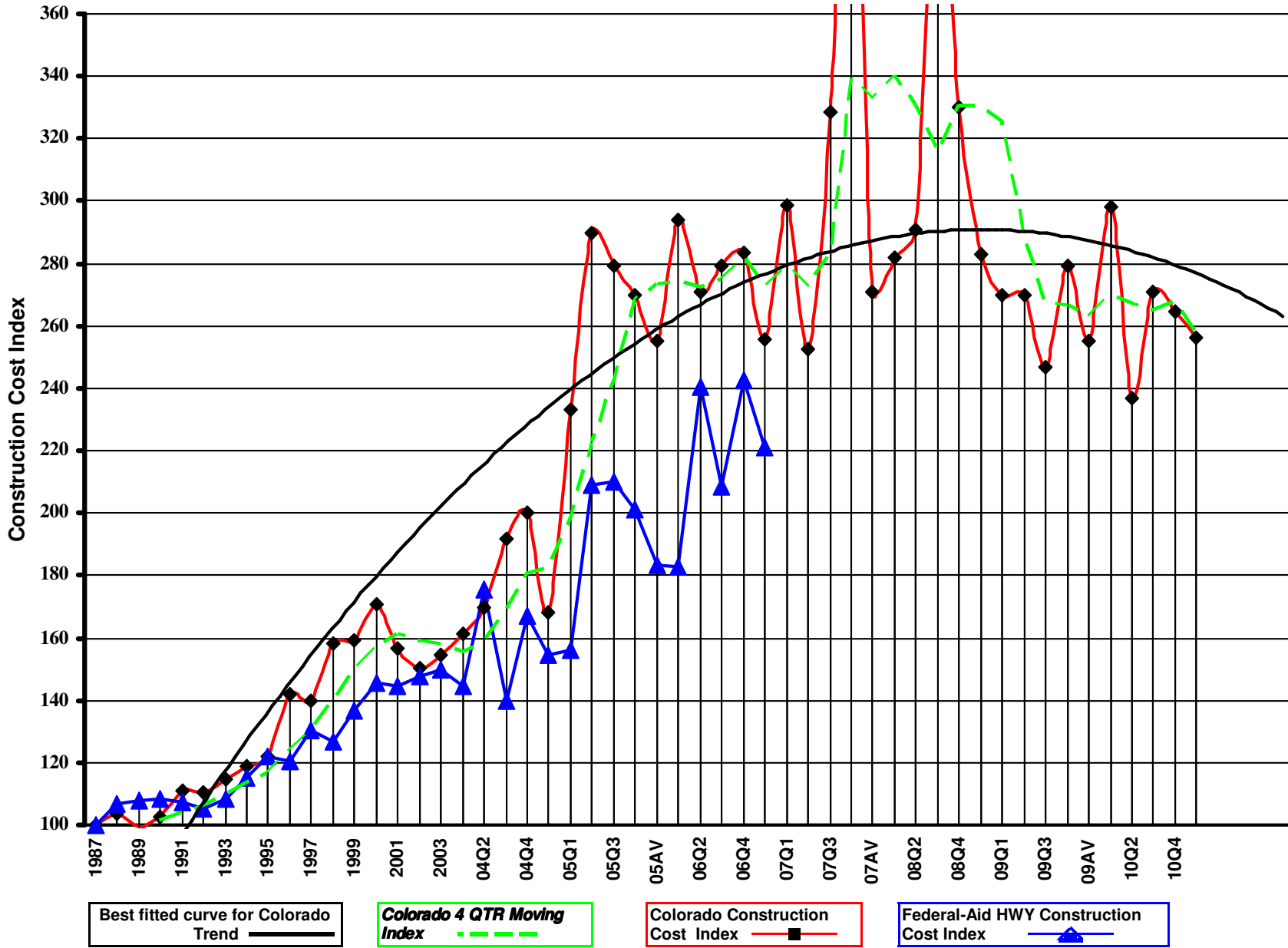
**COMPOSITE INDEX = 256.2**

**Sum of the 6 categories cost = \$330,077,372.76**

HBP Unit Price per CY = \$122.61

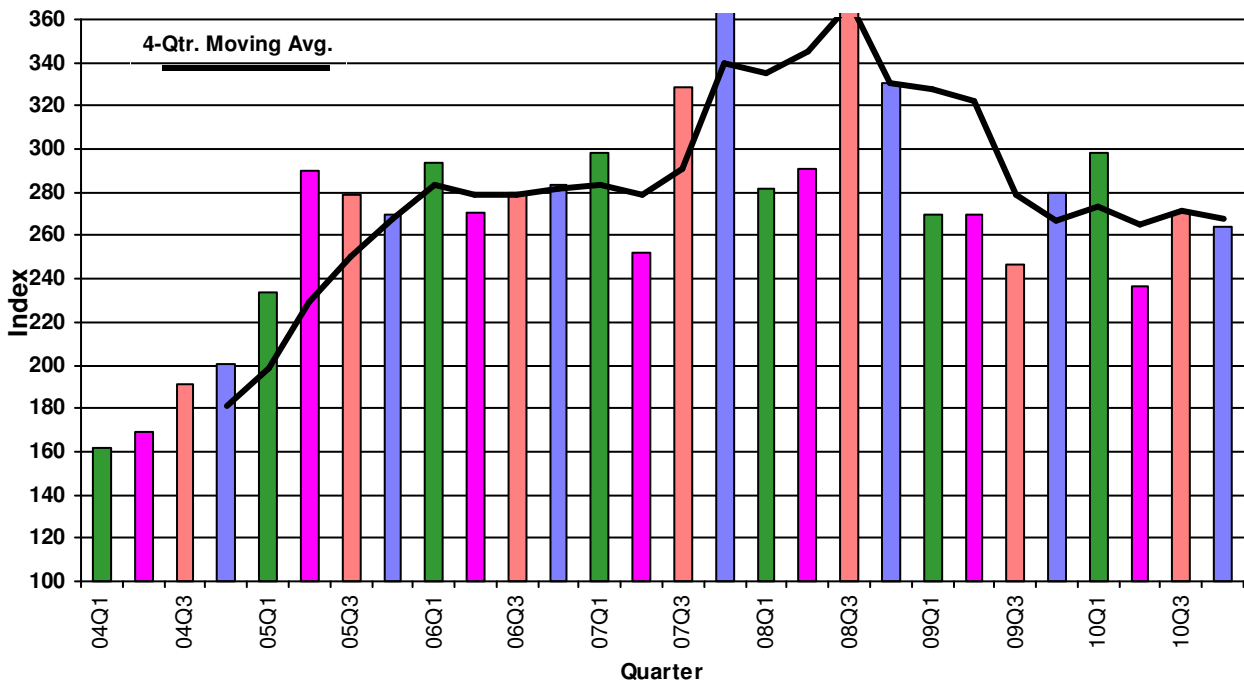
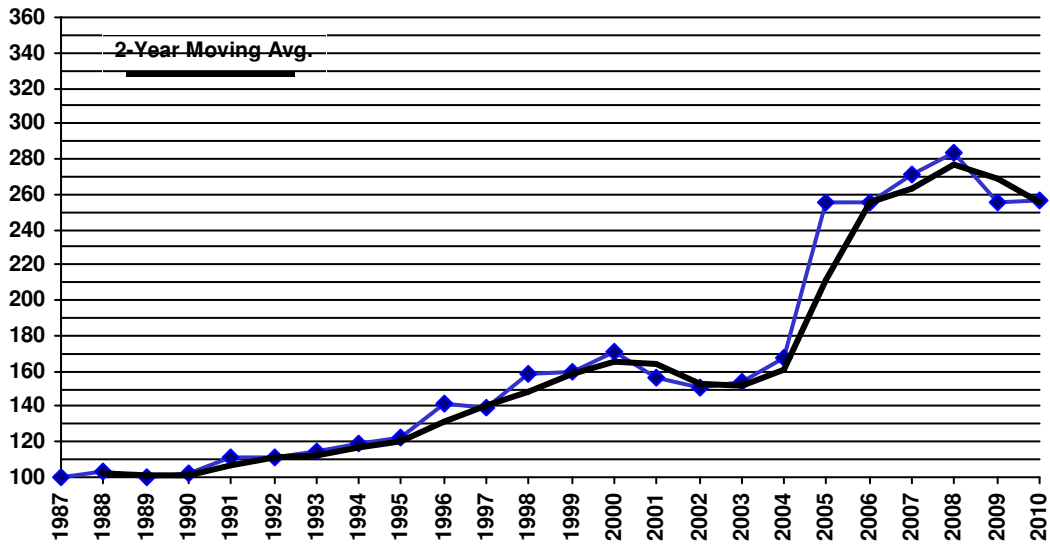
Concrete Pavement Unit Price per CY = \$116.78

**Colorado Highway Construction Cost Index Graph and Tabulations (1987 Base Year)**





## Colorado Construction Cost Index



## Colorado Highway Construction Cost Index Graph and Tabulations (1987 Base Year)

YEAR	QTR.	Earthwork		Asph. Pavement		Concrete Pavement		Surfacing Index	Structural Concrete		Reinforcing Steel		Structural Steel		Structural Index	Composite Index
		Bid Price	Index	Bid Price	Index	Bid Price	Index		Bid Price	Index	Bid Price	Index	Bid Price	Index		
1987	1987	\$2.47	100.0	\$23.17	100.0	\$13.36	100.0	100.0	\$217.32	100.0	\$0.41	100.0	\$0.85	100.0	100.0	100.0
1988	1988	\$2.92	118.1	\$23.88	103.0	\$13.84	103.6	103.1	\$195.02	89.7	\$0.45	110.7	\$0.89	104.1	96.7	103.7
1989	1989	\$2.57	103.9	\$23.67	102.2	\$11.65	87.2	100.6	\$199.41	91.8	\$0.40	97.8	\$0.88	103.5	95.3	99.6
1990	1990	\$2.78	112.5	\$23.98	103.5	\$15.09	113.0	104.5	\$190.86	87.8	\$0.37	90.8	\$0.99	116.0	94.1	102.7
1991	1991	\$3.31	133.8	\$26.25	113.3	\$16.03	120.0	114.0	\$195.43	89.9	\$0.38	93.1	\$0.89	104.4	93.5	111.2
1992	1992	\$2.77	112.3	\$26.20	113.1	\$23.82	178.3	119.8	\$216.87	99.8	\$0.36	87.9	\$0.71	82.8	94.0	110.7
1993	1993	\$3.25	131.4	\$27.74	119.7	\$16.75	125.4	121.3	\$212.43	97.7	\$0.37	90.1	\$0.79	93.0	95.3	114.7
1994	1994	\$3.56	144.2	\$28.40	122.6	\$18.78	140.6	124.4	\$219.94	101.2	\$0.37	89.7	\$0.67	78.8	94.4	118.8
1995	1995	\$3.41	138.1	\$30.25	130.5	\$17.82	133.4	130.8	\$211.29	97.2	\$0.39	94.0	\$0.90	105.5	98.3	122.3
1996	1996	\$4.46	180.5	\$32.73	141.3	\$19.22	143.9	141.5	\$265.98	122.4	\$0.43	105.1	\$1.09	128.5	120.2	141.7
1997	1997	\$4.24	171.7	\$32.92	142.1	\$21.39	160.1	143.9	\$246.29	113.3	\$0.45	110.8	\$1.01	117.9	113.8	139.6
1998	1998	\$4.89	198.0	\$35.72	154.2	\$26.54	198.7	158.7	\$283.01	130.2	\$0.50	122.0	(\$1.00)	-1.0	128.2	158.1
1999	1999	\$4.94	199.8	\$35.23	152.0	\$22.78	170.5	153.9	\$310.56	142.9	\$0.54	132.0	\$1.41	165.3	145.3	159.2
2000	2000	\$5.25	212.6	\$40.02	173.0	\$20.56	153.9	170.8	\$346.82	159.6	\$0.47	115.2	\$1.18	138.8	146.8	170.7
2001	2001	\$4.19	169.5	\$38.67	167.4	\$17.45	130.6	163.2	\$303.22	139.5	\$0.50	120.9	\$1.29	151.5	138.4	156.8
2002	2002	\$3.74	151.2	\$37.99	164.7	\$24.81	185.7	166.2	\$285.35	131.3	\$0.50	121.3	\$0.78	91.9	121.4	150.1
2003	2003	\$4.42	178.9	\$38.23	165.7	\$20.91	156.6	164.1	\$289.44	133.2	\$0.55	133.4	\$0.72	84.7	123.4	154.4
2004	04Q2	\$5.84	236.6	\$35.97	155.9	\$28.42	212.8	161.2	\$297.92	137.1	\$0.78	190.1	\$1.13	132.9	146.5	169.6
2004	04Q3	\$4.38	177.1	\$43.33	188.0	\$27.59	206.5	189.0	\$350.71	161.4	\$0.91	221.3	\$2.70	316.3	204.4	191.6
2004	04Q4	\$7.39	298.9	\$41.45	179.2	\$40.01	299.5	191.3	\$305.55	140.6	\$0.74	179.9	\$0.00	0.0	150.1	200.3
2004	04AV	\$4.60	186.1	\$37.43	162.1	\$28.96	216.8	167.2	\$323.50	148.9	\$0.83	202.7	\$1.26	147.6	159.0	168.0
2004	04Q1	\$3.94	159.7	\$36.03	156.1	\$31.13	233.0	163.5	\$297.69	137.0	\$0.71	172.4	\$1.78	208.9	158.4	161.3
2005	05Q1	\$9.43	381.7	\$41.99	182.3	\$60.10	449.9	208.8	\$443.32	204.0	\$0.91	222.2	\$1.10	128.9	192.2	233.3
2005	05Q2	\$16.07	650.5	\$44.19	192.4	\$28.54	213.6	193.1	\$540.39	248.7	\$0.98	240.0	\$0.00	0.0	246.6	289.8
2005	05Q3	\$9.74	394.2	\$57.71	249.5	\$34.29	256.7	249.9	\$491.90	226.4	\$0.97	237.3	\$3.50	410.2	265.9	279.3
2005	05AV	\$12.90	522.0	\$44.17	191.8	\$30.69	229.8	194.7	\$508.77	234.1	\$0.96	232.9	\$1.01	118.4	210.4	255.2
2005	05Q4	\$12.52	506.9	\$52.73	228.4	\$56.18	420.5	247.4	\$407.63	187.6	\$0.81	198.2	\$0.97	113.7	174.6	269.7
2006	06Q4	\$6.20	251.1	\$67.40	291.4	\$45.03	337.1	295.6	\$387.04	178.1	\$0.79	191.9	\$5.70	667.6	280.3	283.4
2006	06Q3	\$7.03	284.7	\$74.90	323.5	\$26.79	200.6	310.6	\$439.17	202.1	\$0.91	222.3	\$0.00	0.0	207.0	279.4
2006	06AV	\$7.54	305.1	\$59.61	258.4	\$33.79	253.0	256.8	\$430.27	198.0	\$0.92	223.5	\$2.62	306.9	225.1	255.5
2006	06Q2	\$10.68	432.4	\$58.85	255.1	\$28.40	212.6	249.7	\$426.20	196.1	\$1.11	271.4	\$1.93	226.1	216.8	270.9
2006	06Q1	\$11.48	464.6	\$54.99	238.8	\$47.80	357.8	249.7	\$566.84	260.9	\$1.22	296.5	\$0.00	0.0	269.5	293.8
2007	07Q1	\$9.68	391.6	\$63.57	274.9	\$54.18	405.6	287.8	\$564.69	259.9	\$1.41	343.2	\$1.75	205.1	264.8	298.6
2007	07Q2	\$5.99	242.5	\$67.30	290.9	\$38.03	284.7	289.9	\$468.58	215.6	\$0.89	217.7	\$0.85	99.8	192.5	252.5
2007	07Q3	\$10.32	417.6	\$81.60	352.9	\$28.59	214.0	338.0	\$588.03	270.6	\$1.06	258.9	\$2.00	234.4	261.0	328.3
2007	07Q4	\$17.76	719.0	\$103.64	448.2	\$98.13	734.6	476.8	\$563.39	259.3	\$1.02	249.2	\$5.90	691.1	345.1	478.4
2007	07AV	\$7.18	290.5	\$66.58	287.9	\$37.76	282.7	286.9	\$546.29	251.4	\$1.01	245.7	\$1.40	163.6	232.4	271.1
2008	08AV	\$9.04	365.7	\$69.72	302.2	\$29.93	224.1	293.0	\$467.51	215.1	\$1.05	255.8	\$1.65	193.6	218.6	283.0
2008	08Q1	\$10.52	425.9	\$64.79	280.6	\$48.08	359.9	287.9	\$334.70	154.0	\$0.83	202.1	\$0.00	0.0	165.7	281.7
2008	08Q2	\$9.35	378.4	\$74.05	321.5	\$29.27	219.1	309.3	\$436.09	200.7	\$1.03	251.6	\$1.65	193.6	209.1	290.9
2008	08Q3	\$12.12	490.4	\$96.63	418.0	\$53.31	399.0	415.2	\$832.10	382.9	\$1.48	359.8	\$0.00	0.0	377.3	419.2
2008	08Q4	\$5.80	234.8	\$100.36	434.4	\$31.60	236.6	412.9	\$430.70	198.2	\$1.11	270.0	\$0.00	0.0	215.6	330.1



**Colorado Highway Construction Cost Index Graph and Tabulations (1987 Base Year)**

2009	09Q2	\$7.91	320.1	\$65.25	282.2	\$37.17	278.3	281.3	\$379.98	174.9	\$0.70	169.7	\$3.46	405.9	220.8	269.7
2009	09Q1	\$5.87	237.5	\$67.74	292.9	\$78.51	587.7	322.7	\$425.40	195.8	\$0.85	207.2	\$1.55	181.7	195.1	269.8
2009	09AV	\$6.63	268.3	\$66.49	287.5	\$44.12	330.2	291.4	\$399.34	183.8	\$0.75	183.8	\$1.58	185.5	184.1	255.1
2009	09Q4	\$6.13	248.1	\$77.79	336.4	\$38.79	290.4	331.1	\$352.16	162.1	\$0.54	132.7	\$3.50	410.2	206.8	279.5
2009	09Q3	\$6.11	247.5	\$62.94	272.0	\$31.44	235.4	267.9	\$450.29	207.2	\$0.90	218.9	\$1.77	207.8	209.6	246.8
2010	10Q4	\$8.52	344.7	\$64.69	279.6	\$32.63	244.3	275.6	\$395.91	182.2	\$0.76	186.3	\$0.00	0.0	183.2	264.5
2010	10Q1	\$9.92	401.5	\$64.06	277.0	\$57.85	433.0	292.6	\$553.84	254.9	\$0.86	208.7	\$2.35	275.4	250.1	298.3
2010	10Q3	\$9.30	376.3	\$59.49	257.1	\$48.22	361.0	267.4	\$428.29	197.1	\$0.91	222.9	\$0.00	0.0	203.3	270.8
2010	Q1AV	\$7.86	318.3	\$61.92	267.9	\$29.19	218.5	262.2	\$430.84	198.3	\$0.78	190.6	\$2.27	266.4	210.6	256.2
2010	10Q2	\$6.46	261.6	\$61.24	265.3	\$25.06	187.6	256.4	\$364.09	167.6	\$0.70	170.4	\$2.27	265.8	188.1	236.7

[View Annual/Qtr Graphs](#)

[View Tabular Report](#)