

## CCI ITEMS USED FROM 1/1/2004 TO 12/31/2004

| ITEM CODE                                                                                                                                                                                                                         | # OF ITEM  | QUANTITY                         | PRICE                  | UNIT PRICE      | INDEX        |
|-----------------------------------------------------------------------------------------------------------------------------------------------------------------------------------------------------------------------------------|------------|----------------------------------|------------------------|-----------------|--------------|
| 203-00000 To 203-00060<br>203-00062 To 203-00210<br>203-00400 To 203-00500<br>203-01020 To 203-01030<br>209-00000 To 209-00050                                                                                                    | 100        | English (CY)<br>3,490,513.70     | \$16,048,182.77        | \$4.60          |              |
|                                                                                                                                                                                                                                   | 0          | Metric (CM)<br>0.00              | \$0.00                 | \$0.00          |              |
| <b>UNCLASSIFIED EXCAV (CIP)</b>                                                                                                                                                                                                   | <b>100</b> | <b>3,490,513.70<sup>CY</sup></b> | <b>\$16,048,182.77</b> | <b>\$4.60</b>   | <b>186.1</b> |
| 403-00720, 403-01000,<br>403-01010, 403-02000,<br>403-09121 To 403-09500<br>403-31300 To 403 36447<br>403-91401 To 403-95353<br>411-03100 To 411-03355<br>411-10010 To 411-90010 (Gal/Lit)<br>Gallon & Liter are converted to Ton | 355        | English (TON)<br>2,569,335.97    | \$96,165,260.57        | \$37.43         |              |
|                                                                                                                                                                                                                                   | 0          | Metric (MT)<br>0.00              | \$0.00                 | \$0.00          |              |
| <b>HOT BIT. PAVEMENT (H_A)</b>                                                                                                                                                                                                    | <b>355</b> | <b>2,569,335.97<sup>T</sup></b>  | <b>\$96,165,260.57</b> | <b>\$37.43</b>  | <b>162.1</b> |
| 412-00000 To 412-00050<br>412-00700 To 412-01352<br>412-03000 To 412-03000                                                                                                                                                        | 33         | English (SY)<br>412,103.02       | \$11,933,967.83        | \$28.96         |              |
|                                                                                                                                                                                                                                   | 0          | Metric (SM)<br>0.00              | \$0.00                 | \$0.00          |              |
| <b>CONCRETE PAVEMENT (9")</b>                                                                                                                                                                                                     | <b>33</b>  | <b>412,103.02<sup>SY</sup></b>   | <b>\$11,933,967.83</b> | <b>\$28.96</b>  | <b>216.8</b> |
| <b>SURFACING TOTAL INDEX</b>                                                                                                                                                                                                      |            |                                  |                        |                 | <b>167.2</b> |
| 509-00000 To 509-00000                                                                                                                                                                                                            | 7          | English (LB)<br>2,050,026.00     | \$2,582,026.57         | \$1.26          |              |
|                                                                                                                                                                                                                                   | 0          | Metric (KG)<br>0.00              | \$0.00                 | \$0.00          |              |
| <b>STRUCTURAL STEEL</b>                                                                                                                                                                                                           | <b>7</b>   | <b>2,050,026.00<sup>LB</sup></b> | <b>\$2,582,026.57</b>  | <b>\$1.26</b>   | <b>147.6</b> |
| 601-01022 To 601-01022<br>601-01030 To 601-01060<br>601-03030 To 601-05064                                                                                                                                                        | 59         | English (CY)<br>30,397.12        | \$9,833,594.49         | \$323.50        |              |
|                                                                                                                                                                                                                                   | 0          | Metric (CM)<br>0.00              | \$0.00                 | \$0.00          |              |
| <b>STRUCTURAL CONCRETE</b>                                                                                                                                                                                                        | <b>59</b>  | <b>30,397.12<sup>CY</sup></b>    | <b>\$9,833,594.49</b>  | <b>\$323.50</b> | <b>148.9</b> |
| 602-00000 To 602-00000<br>602-00020 To 602-00020                                                                                                                                                                                  | 63         | English (LB)<br>7,817,628.20     | \$6,496,309.18         | \$0.83          |              |
|                                                                                                                                                                                                                                   | 0          | Metric (KG)<br>0.00              | \$0.00                 | \$0.00          |              |
| <b>REINFORCING STEEL</b>                                                                                                                                                                                                          | <b>63</b>  | <b>7,817,628.20<sup>LB</sup></b> | <b>\$6,496,309.18</b>  | <b>\$0.83</b>   | <b>202.7</b> |
| <b>STRUCTURAL TOTAL INDEX</b>                                                                                                                                                                                                     |            |                                  |                        |                 | <b>159.0</b> |
| <b>COMPOSITE INDEX =</b>                                                                                                                                                                                                          |            |                                  |                        |                 | <b>168.0</b> |

Sum of the 6 categories cost = \$143,059,341.41

HBP Unit Price per CY = \$74.11

Concrete Pavement Unit Price per CY = \$115.83

## CCI ITEMS USED FROM 10/1/2004 TO 12/31/2004

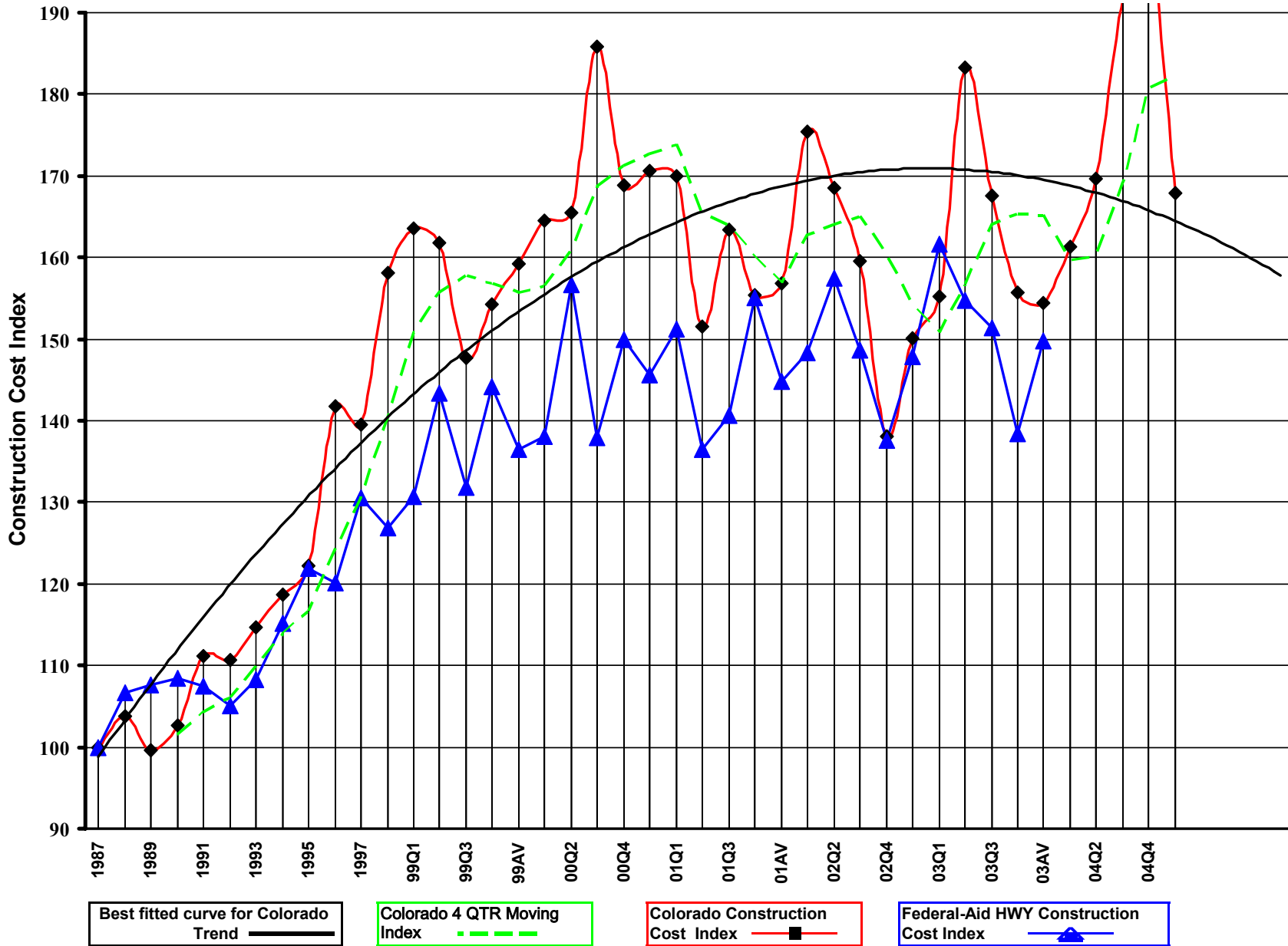
| ITEM CODE                                                                                                                                                                                                                         | # OF ITEM | QUANTITY                         | PRICE                  | UNIT PRICE      | INDEX        |
|-----------------------------------------------------------------------------------------------------------------------------------------------------------------------------------------------------------------------------------|-----------|----------------------------------|------------------------|-----------------|--------------|
| 203-00000 To 203-00060<br>203-00062 To 203-00210<br>203-00400 To 203-00500<br>203-01020 To 203-01030<br>209-00000 To 209-00050                                                                                                    | 15        | English (CY)<br>154,629.60       | \$1,142,000.60         | \$7.39          |              |
|                                                                                                                                                                                                                                   | 0         | Metric (CM)<br>0.00              | \$0.00                 | \$0.00          |              |
| <b>UNCLASSIFIED EXCAV (CIP)</b>                                                                                                                                                                                                   | <b>15</b> | <b>154,629.60<sup>CY</sup></b>   | <b>\$1,142,000.60</b>  | <b>\$7.39</b>   | <b>298.9</b> |
| 403-00720, 403-01000,<br>403-01010, 403-02000,<br>403-09121 To 403-09500<br>403-31300 To 403 36447<br>403-91401 To 403-95353<br>411-03100 To 411-03355<br>411-10010 To 411-90010 (Gal/Lit)<br>Gallon & Liter are converted to Ton | 76        | English (TON)<br>438,000.76      | \$18,156,999.19        | \$41.45         |              |
|                                                                                                                                                                                                                                   | 0         | Metric (MT)<br>0.00              | \$0.00                 | \$0.00          |              |
| <b>HOT BIT. PAVEMENT (H_A)</b>                                                                                                                                                                                                    | <b>76</b> | <b>438,000.76 T</b>              | <b>\$18,156,999.19</b> | <b>\$41.45</b>  | <b>179.2</b> |
| 412-00000 To 412-00050<br>412-00700 To 412-01352<br>412-03000 To 412-03000                                                                                                                                                        | 7         | English (SY)<br>8,084.93         | \$323,440.31           | \$40.01         |              |
|                                                                                                                                                                                                                                   | 0         | Metric (SM)<br>0.00              | \$0.00                 | \$0.00          |              |
| <b>CONCRETE PAVEMENT (9")</b>                                                                                                                                                                                                     | <b>7</b>  | <b>8,084.93<sup>SY</sup></b>     | <b>\$323,440.31</b>    | <b>\$40.01</b>  | <b>299.5</b> |
| <b>SURFACING TOTAL INDEX</b>                                                                                                                                                                                                      |           |                                  |                        |                 | <b>191.3</b> |
| 509-00000 To 509-00000                                                                                                                                                                                                            | 0         | English (LB)<br>0.00             | \$0.00                 | \$0.00          |              |
|                                                                                                                                                                                                                                   | 0         | Metric (KG)<br>0.00              | \$0.00                 | \$0.00          |              |
| <b>STRUCTURAL STEEL</b>                                                                                                                                                                                                           | <b>0</b>  | <b>0.00<sup>LB</sup></b>         | <b>\$0.00</b>          | <b>\$0.00</b>   | <b>0.0</b>   |
| 601-01022 To 601-01022<br>601-01030 To 601-01060<br>601-03030 To 601-05064                                                                                                                                                        | 12        | English (CY)<br>10,356.20        | \$3,164,342.25         | \$305.55        |              |
|                                                                                                                                                                                                                                   | 0         | Metric (CM)<br>0.00              | \$0.00                 | \$0.00          |              |
| <b>STRUCTURAL CONCRETE</b>                                                                                                                                                                                                        | <b>12</b> | <b>10,356.20<sup>CY</sup></b>    | <b>\$3,164,342.25</b>  | <b>\$305.55</b> | <b>140.6</b> |
| 602-00000 To 602-00000<br>602-00020 To 602-00020                                                                                                                                                                                  | 15        | English (LB)<br>1,842,666.00     | \$1,359,477.88         | \$0.74          |              |
|                                                                                                                                                                                                                                   | 0         | Metric (KG)<br>0.00              | \$0.00                 | \$0.00          |              |
| <b>REINFORCING STEEL</b>                                                                                                                                                                                                          | <b>15</b> | <b>1,842,666.00<sup>LB</sup></b> | <b>\$1,359,477.88</b>  | <b>\$0.74</b>   | <b>179.9</b> |
| <b>STRUCTURAL TOTAL INDEX</b>                                                                                                                                                                                                     |           |                                  |                        |                 | <b>150.1</b> |
| <b>COMPOSITE INDEX =</b>                                                                                                                                                                                                          |           |                                  |                        |                 | <b>200.3</b> |

Sum of the 6 categories cost = \$24,146,260.23

HBP Unit Price per CY = \$82.08

Concrete Pavement Unit Price per CY = \$160.02

**Colorado Highway Construction Cost Index Graph and Tabulations (1987 Base Year)**



## Colorado Highway Construction Cost Index Graph and Tabulations (1987 Base Year)

| YEAR | QTR. | Earthwork |       | Asph. Pavement |       | Concrete Pavement |       | Surfacing Index | Structural Concrete |       | Reinforcing Steel |       | Structural Steel |       | Structural Index | Composite Index |
|------|------|-----------|-------|----------------|-------|-------------------|-------|-----------------|---------------------|-------|-------------------|-------|------------------|-------|------------------|-----------------|
|      |      | Bid Price | Index | Bid Price      | Index | Bid Price         | Index |                 | Bid Price           | Index | Bid Price         | Index | Bid Price        | Index |                  |                 |
| 1987 | 1987 | \$2.47    | 100.0 | \$23.17        | 100.0 | \$13.36           | 100.0 | 100.0           | \$217.32            | 100.0 | \$0.41            | 100.0 | \$0.85           | 100.0 | 100.0            | 100.0           |
| 1988 | 1988 | \$2.92    | 118.1 | \$23.88        | 103.0 | \$13.84           | 103.6 | 103.1           | \$195.02            | 89.7  | \$0.45            | 110.7 | \$0.89           | 104.1 | 96.7             | 103.7           |
| 1989 | 1989 | \$2.57    | 103.9 | \$23.67        | 102.2 | \$11.65           | 87.2  | 100.6           | \$199.41            | 91.8  | \$0.40            | 97.8  | \$0.88           | 103.5 | 95.3             | 99.6            |
| 1990 | 1990 | \$2.78    | 112.5 | \$23.98        | 103.5 | \$15.09           | 113.0 | 104.5           | \$190.86            | 87.8  | \$0.37            | 90.8  | \$0.99           | 116.0 | 94.1             | 102.7           |
| 1991 | 1991 | \$3.31    | 133.8 | \$26.25        | 113.3 | \$16.03           | 120.0 | 114.0           | \$195.43            | 89.9  | \$0.38            | 93.1  | \$0.89           | 104.4 | 93.5             | 111.2           |
| 1992 | 1992 | \$2.77    | 112.3 | \$26.20        | 113.1 | \$23.82           | 178.3 | 119.8           | \$216.87            | 99.8  | \$0.36            | 87.9  | \$0.71           | 82.8  | 94.0             | 110.7           |
| 1993 | 1993 | \$3.25    | 131.4 | \$27.74        | 119.7 | \$16.75           | 125.4 | 121.3           | \$212.43            | 97.7  | \$0.37            | 90.1  | \$0.79           | 93.0  | 95.3             | 114.7           |
| 1994 | 1994 | \$3.56    | 144.2 | \$28.40        | 122.6 | \$18.78           | 140.6 | 124.4           | \$219.94            | 101.2 | \$0.37            | 89.7  | \$0.67           | 78.8  | 94.4             | 118.8           |
| 1995 | 1995 | \$3.41    | 138.1 | \$30.25        | 130.5 | \$17.82           | 133.4 | 130.8           | \$211.29            | 97.2  | \$0.39            | 94.0  | \$0.90           | 105.5 | 98.3             | 122.3           |
| 1996 | 1996 | \$4.46    | 180.5 | \$32.73        | 141.3 | \$19.22           | 143.9 | 141.5           | \$265.98            | 122.4 | \$0.43            | 105.1 | \$1.09           | 128.5 | 120.2            | 141.7           |
| 1997 | 1997 | \$4.24    | 171.7 | \$32.92        | 142.1 | \$21.39           | 160.1 | 143.9           | \$246.29            | 113.3 | \$0.45            | 110.8 | \$1.01           | 117.9 | 113.8            | 139.6           |
| 1998 | 1998 | \$4.89    | 198.0 | \$35.72        | 154.2 | \$26.54           | 198.7 | 158.7           | \$283.01            | 130.2 | \$0.50            | 122.0 | (\$1.00)         | -1.0  | 128.2            | 158.1           |
| 1999 | 99Q1 | \$5.91    | 239.4 | \$36.57        | 157.8 | \$18.57           | 139.0 | 155.9           | \$335.29            | 154.3 | \$0.59            | 144.9 | \$0.54           | 63.8  | 134.1            | 163.5           |
| 1999 | 99Q2 | \$5.34    | 216.0 | \$35.09        | 151.4 | \$21.90           | 163.9 | 152.7           | \$326.59            | 150.3 | \$0.61            | 149.8 | \$1.15           | 135.3 | 147.1            | 161.8           |
| 1999 | 99Q3 | \$4.42    | 178.8 | \$36.62        | 158.1 | \$24.59           | 184.1 | 160.7           | \$298.62            | 137.4 | \$0.52            | 125.5 | (\$1.00)         | -1.0  | 107.2            | 147.7           |
| 1999 | 99Q4 | \$4.11    | 166.5 | \$33.96        | 146.6 | \$33.04           | 247.3 | 156.9           | \$305.27            | 140.5 | \$0.50            | 121.1 | \$1.46           | 171.1 | 143.0            | 154.3           |
| 1999 | 99AV | \$4.94    | 199.8 | \$35.23        | 152.0 | \$22.78           | 170.5 | 153.9           | \$310.56            | 142.9 | \$0.54            | 132.0 | \$1.41           | 165.3 | 145.3            | 159.2           |
| 2000 | 00Q1 | \$5.11    | 206.9 | \$36.84        | 159.0 | \$21.73           | 162.7 | 159.4           | \$341.22            | 157.0 | \$0.45            | 110.2 | (\$1.00)         | -1.0  | 145.7            | 164.5           |
| 2000 | 00Q2 | \$4.41    | 178.5 | \$40.71        | 175.7 | \$11.84           | 88.6  | 166.8           | \$374.75            | 172.5 | \$0.47            | 114.7 | \$1.25           | 146.2 | 155.9            | 165.5           |
| 2000 | 00Q3 | \$6.42    | 259.7 | \$43.57        | 188.0 | \$22.69           | 169.8 | 186.2           | \$355.44            | 163.6 | \$0.47            | 114.0 | \$0.96           | 111.9 | 143.5            | 185.8           |
| 2000 | 00Q4 | \$4.77    | 193.0 | \$38.42        | 166.0 | \$43.65           | 326.8 | 182.4           | \$288.39            | 132.7 | \$0.51            | 123.3 | \$1.16           | 136.3 | 131.6            | 168.9           |
| 2000 | 00AV | \$5.25    | 212.6 | \$40.02        | 173.0 | \$20.56           | 153.9 | 170.8           | \$346.82            | 159.6 | \$0.47            | 115.2 | \$1.18           | 138.8 | 146.8            | 170.7           |
| 2001 | 01Q1 | \$4.14    | 167.6 | \$40.40        | 175.5 | \$37.17           | 278.2 | 185.0           | \$311.48            | 143.3 | \$0.51            | 123.8 | \$0.00           | 0.0   | 138.6            | 170.0           |
| 2001 | 01Q2 | \$4.78    | 193.6 | \$35.62        | 154.0 | \$13.66           | 102.3 | 148.5           | \$282.89            | 130.2 | \$0.50            | 122.6 | \$0.00           | 0.0   | 128.3            | 151.5           |
| 2001 | 01Q3 | \$4.29    | 173.6 | \$41.20        | 177.9 | \$20.63           | 154.5 | 175.4           | \$297.55            | 136.9 | \$0.50            | 120.8 | \$1.29           | 151.5 | 136.8            | 163.4           |
| 2001 | 01Q4 | \$3.13    | 126.6 | \$34.33        | 147.6 | \$47.93           | 358.8 | 169.8           | \$335.74            | 154.5 | \$0.45            | 110.2 | \$0.00           | 0.0   | 143.7            | 155.3           |
| 2001 | 01AV | \$4.19    | 169.5 | \$38.67        | 167.4 | \$17.45           | 130.6 | 163.2           | \$303.22            | 139.5 | \$0.50            | 120.9 | \$1.29           | 151.5 | 138.4            | 156.8           |
| 2002 | 02Q1 | \$6.25    | 252.9 | \$37.53        | 163.1 | \$31.12           | 233.0 | 169.3           | \$293.38            | 135.0 | \$0.53            | 129.6 | \$0.00           | 0.0   | 133.7            | 175.4           |
| 2002 | 02Q2 | \$5.69    | 230.3 | \$39.67        | 171.5 | \$28.33           | 212.1 | 175.4           | \$294.41            | 135.5 | \$0.50            | 121.3 | \$0.70           | 82.4  | 121.9            | 168.6           |
| 2002 | 02Q3 | \$4.42    | 178.8 | \$34.98        | 151.4 | \$25.51           | 190.9 | 155.1           | \$299.12            | 137.7 | \$0.49            | 120.5 | \$2.11           | 247.3 | 156.6            | 159.6           |
| 2002 | 02Q4 | \$2.31    | 93.3  | \$38.71        | 167.5 | \$21.26           | 159.2 | 166.2           | \$257.37            | 118.4 | \$0.49            | 120.7 | \$0.81           | 95.0  | 114.1            | 138.1           |
| 2002 | 02AV | \$3.74    | 151.2 | \$37.99        | 164.7 | \$24.81           | 185.7 | 166.2           | \$285.35            | 131.3 | \$0.50            | 121.3 | \$0.78           | 91.9  | 121.4            | 150.1           |
| 2003 | 03Q1 | \$4.23    | 171.2 | \$36.48        | 158.2 | \$24.92           | 186.6 | 160.4           | \$283.25            | 130.4 | \$0.57            | 137.9 | \$0.00           | 0.0   | 132.2            | 155.2           |
| 2003 | 03Q2 | \$10.00   | 404.8 | \$40.35        | 174.9 | \$43.68           | 327.0 | 189.9           | \$327.84            | 150.9 | \$0.62            | 151.9 | \$0.31           | 36.3  | 127.8            | 183.2           |
| 2003 | 03Q3 | \$4.64    | 187.9 | \$41.05        | 177.5 | \$18.89           | 141.4 | 173.5           | \$336.84            | 155.0 | \$0.58            | 140.5 | \$1.05           | 123.1 | 145.7            | 167.6           |
| 2003 | 03Q4 | \$3.85    | 155.7 | \$40.10        | 173.5 | \$19.51           | 146.1 | 170.3           | \$267.39            | 123.1 | \$0.51            | 125.0 | \$0.00           | 0.0   | 123.5            | 155.7           |
| 2003 | 03AV | \$4.42    | 178.9 | \$38.23        | 165.7 | \$20.91           | 156.6 | 164.1           | \$289.44            | 133.2 | \$0.55            | 133.4 | \$0.72           | 84.7  | 123.4            | 154.4           |
| 2004 | 04Q1 | \$3.94    | 159.7 | \$36.03        | 156.1 | \$31.13           | 233.0 | 163.5           | \$297.69            | 137.0 | \$0.71            | 172.4 | \$1.78           | 208.9 | 158.4            | 161.3           |
| 2004 | 04Q2 | \$5.84    | 236.6 | \$35.97        | 155.9 | \$28.42           | 212.8 | 161.2           | \$297.92            | 137.1 | \$0.78            | 190.1 | \$1.13           | 132.9 | 146.5            | 169.6           |
| 2004 | 04Q3 | \$4.38    | 177.1 | \$43.33        | 188.0 | \$27.59           | 206.5 | 189.0           | \$350.71            | 161.4 | \$0.91            | 221.3 | \$2.70           | 316.3 | 204.4            | 191.6           |
| 2004 | 04Q4 | \$7.39    | 298.9 | \$41.45        | 179.2 | \$40.01           | 299.5 | 191.3           | \$305.55            | 140.6 | \$0.74            | 179.9 | \$0.00           | 0.0   | 150.1            | 200.3           |
| 2004 | AV   | \$4.60    | 186.1 | \$37.43        | 162.1 | \$28.96           | 216.8 | 167.2           | \$323.50            | 148.9 | \$0.83            | 202.7 | \$1.26           | 147.6 | 159.0            | 168.0           |

## Colorado Construction Cost Index

