

# STATE OF COLORADO

---



**DEPARTMENT OF TRANSPORTATION**

4201 East Arkansas Avenue  
Denver, Colorado 80222  
(303) 757-9293

August 15, 2003

**COLORADO CONSTRUCTION COST INDEX REPORT**  
Calendar year 2003  
Second Quarter

Prepared by  
Dino Sarganis  
Engineering Estimates and Market Analysis Unit of  
Contracts and Market Analysis Branch

Prepared for  
Craig Siracusa, Chief Engineer

# STATE OF COLORADO



## DEPARTMENT OF TRANSPORTATION

4201 East Arkansas Avenue  
Denver, Colorado 80222  
(303) 757-9293

### SUMMARY

#### CONSTRUCTION COST INDEX FOR SELECTED HIGHWAY CONSTRUCTION ITEMS

2nd QUARTER ENDING June 30, 2003

Index for this quarter.....	183.2
Index for last quarter.....	155.2
Point change from last quarter.....	+28.0
Percentage change from last quarter.....	+18.0%
Index for same quarter of last year.....	168.6
Point change from same quarter last year.....	+14.6
Percentage change from this quarter last year.....	+ 8.6%

Average number of bidders this quarter.....	4.57
Change in number of bidders from last quarter.....	- 15.5%

NOTE: All information shown in this publication was assembled using 1987 as the base year.

**Summary Report for all the projects awarded between 4/1/2003 And 6/30/2003**

<i>Project Amount</i>	<i>No. of Projects</i>	<i>No. of Bidders</i>	<i>Total Contract Amt.</i>	<i>Avg. # of Bids</i>
<i>\$0.00 to \$49,999.99</i>	4	19	\$140,445.10	4.8
<i>\$50,000.00 to \$99,999.99</i>	3	15	\$212,090.50	5.0
<i>\$100,000.00 to \$249,999.99</i>	4	18	\$815,253.60	4.5
<i>\$250,000.00 to \$499,999.99</i>	13	56	\$4,822,798.57	4.3
<i>\$500,000.00 to \$999,999.99</i>	8	34	\$6,449,586.63	4.3
<i>1,000,000.00 to \$2,499,999.99</i>	11	49	\$17,925,620.28	4.5
<i>2,500,000.00 to \$4,999,999.99</i>	7	34	\$23,514,336.14	4.9
<i>5,000,000.00 to \$9,999,999.99</i>	1	8	\$6,157,808.95	8.0
<i>10,000,000.00 to \$19,999,999.99</i>	0			
<i>20,000,000.00 to \$49,499,999.99</i>	0			
<i>50,000,000.00 or Greater</i>	0			
<b>Total</b>	<b>51</b>	<b>233</b>	<b>\$60,037,939.77</b>	

The number of bidders on all projects awards during this period averaged 4.57 bidders per contract.

Average cost per project is \$1,177,214.51

2nd Quarter 2002 CCI Items:	\$25,466,231.54	
	-----	= 42.42%
2nd Quarter All Construction Items:	\$60,037,939.77	

**CCI ITEMS USED FROM 4/1/2003 TO 6/30/2003**

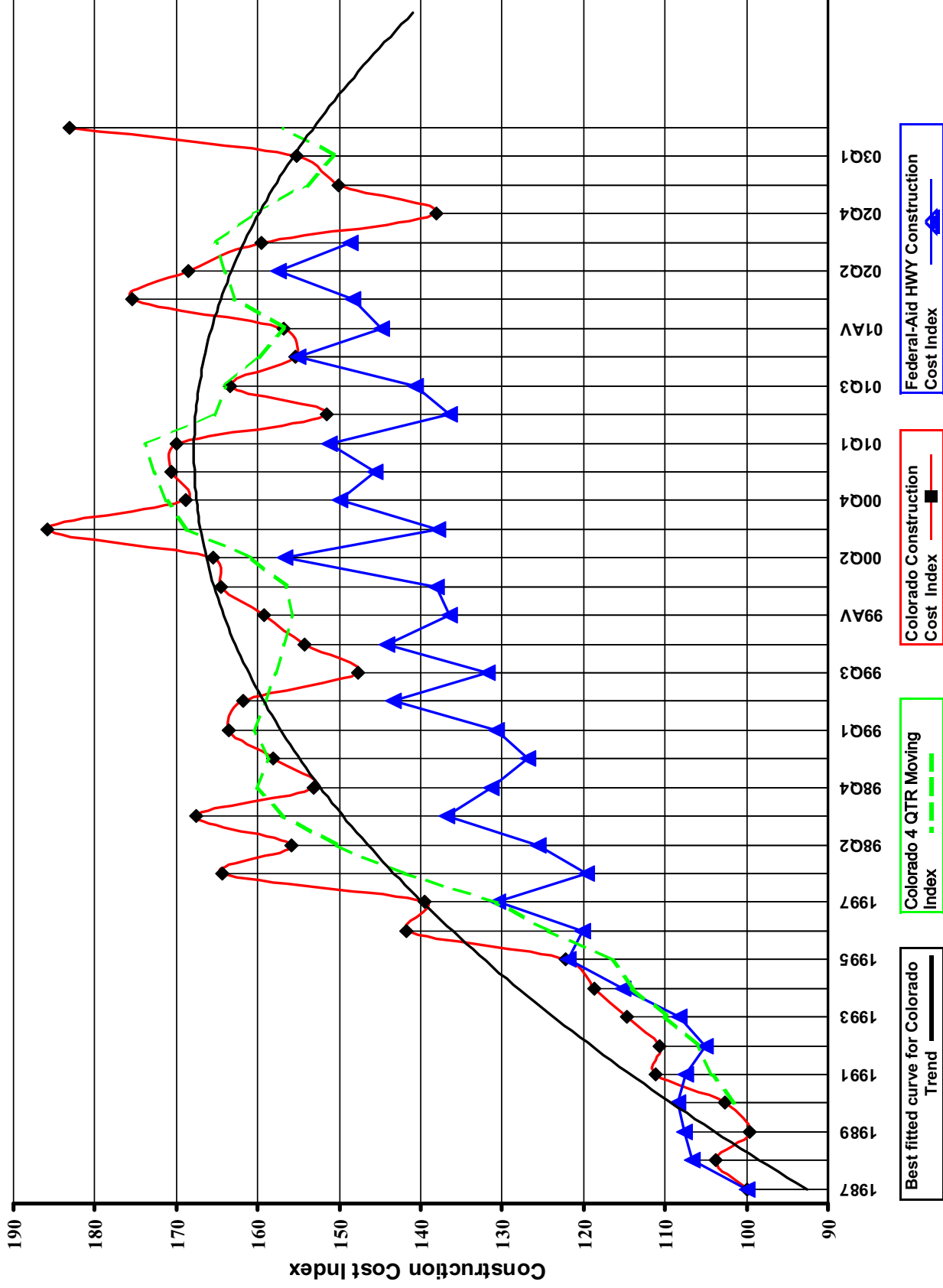
ITEM CODE	# OF ITEM	QUANTITY	PRICE	UNIT PRICE	INDEX
203-00000 To 203-00060 203-00062 To 203-00210 203-00400 To 203-00500	30	English (CY) 294,247.00	\$2,943,184.29	\$10.00	
203-01020 To 203-01030 209-00000 To 209-00050	0	Metric (CM) 0.00	\$0.00	\$0.00	
<b>UNCLASSIFIED EXCAV (CIP)</b>	<b>30</b>	<b>294,247.00<sup>CY</sup></b>	<b>\$2,943,184.29</b>	<b>\$10.00</b>	<b>404.8</b>
403-00720, 403-01000, 403-01010, 403-02000, 403-09121 To 403-09500 403-31300 To 403 36447 403-91401 To 403-95353 411-03100 To 411-03355 411-10010 To 411-90010 (Gal/Lit) Gallon & Liter are converted to Ton	98	English (TON) 499,522.14	\$20,155,601.90	\$40.35	
	0	Metric (MT) 0.00	\$0.00	\$0.00	
<b>HOT BIT. PAVEMENT (H_A)</b>	<b>98</b>	<b>499,522.14 T</b>	<b>\$20,155,601.90</b>	<b>\$40.35</b>	<b>174.9</b>
412-00000 To 412-00050 412-00700 To 412-01352 412-03000 To 412-03000	7	English (SY) 14,189.75	\$619,869.09	\$43.68	
	0	Metric (SM) 0.00	\$0.00	\$0.00	
<b>CONCRETE PAVEMENT (9")</b>	<b>7</b>	<b>14,189.75<sup>SY</sup></b>	<b>\$619,869.09</b>	<b>\$43.68</b>	<b>327.0</b>
<b>SURFACING TOTAL INDEX</b>					<b>189.9</b>
509-00000 To 509-00000	2	English (LB) 396,624.00	\$122,757.50	\$0.31	
	0	Metric (KG) 0.00	\$0.00	\$0.00	
<b>STRUCTURAL STEEL</b>	<b>2</b>	<b>396,624.00<sup>LB</sup></b>	<b>\$122,757.50</b>	<b>\$0.31</b>	<b>36.3</b>
601-01022 To 601-01022 601-01030 To 601-01060 601-03030 To 601-05064	15	English (CY) 3,773.40	\$1,237,086.51	\$327.84	
	0	Metric (CM) 0.00	\$0.00	\$0.00	
<b>STRUCTURAL CONCRETE</b>	<b>15</b>	<b>3,773.40<sup>CY</sup></b>	<b>\$1,237,086.51</b>	<b>\$327.84</b>	<b>150.9</b>
602-00000 To 602-00000 602-00020 To 602-00020	19	English (LB) 622,527.00	\$387,732.25	\$0.62	
	0	Metric (KG) 0.00	\$0.00	\$0.00	
<b>REINFORCING STEEL</b>	<b>19</b>	<b>622,527.00<sup>LB</sup></b>	<b>\$387,732.25</b>	<b>\$0.62</b>	<b>151.9</b>
<b>STRUCTURAL TOTAL INDEX</b>					<b>127.8</b>
<b>COMPOSITE INDEX =</b>					<b>183.2</b>

Sum of the 6 categories cost = \$25,466,231.54

HBP Unit Price per CY = \$79.89

Concrete Pavement Unit Price per CY = \$174.74

Colorado Highway Construction Cost Index Graph and Tabulations (1987 Base Year)



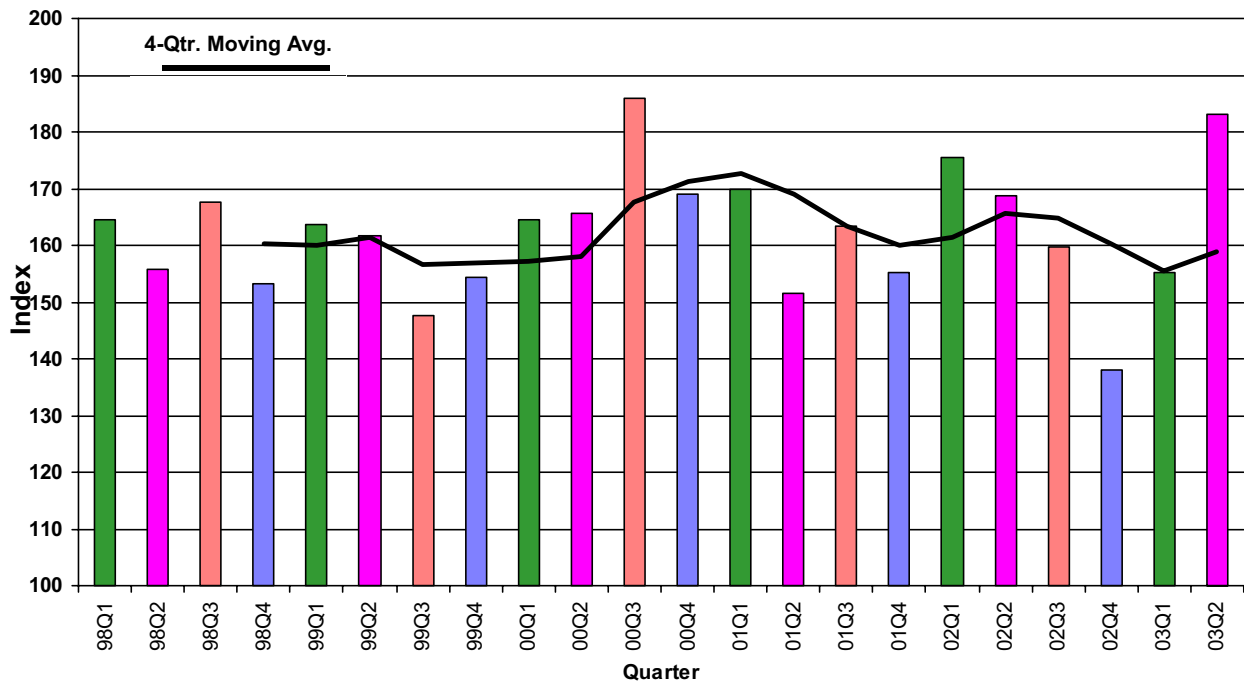
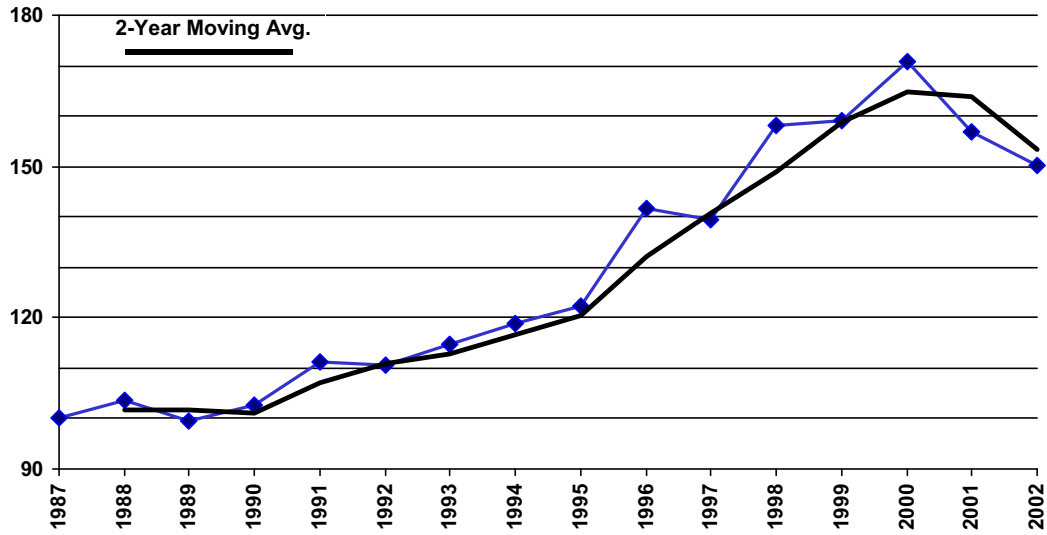
**Colorado Highway Construction Cost Index Graph and Tabulations (1987 Base Year)**

YEAR	QTR.	Earthwork		Asph. Pavement		Concrete Pavement		Surfacing		Structural Concrete		Reinforcing Steel		Structural Steel		Composite	
		Bid Price	Index	Bid Price	Index	Bid Price	Index	Bid Price	Index	Bid Price	Index	Bid Price	Index	Bid Price	Index	Bid Price	Index
1987	1987	\$2.47	100.0	\$23.17	100.0	\$13.36	100.0	100.0	100.0	\$217.32	100.0	\$0.41	100.0	\$0.85	100.0	\$0.85	100.0
1988	1988	\$2.92	118.1	\$23.88	103.0	\$13.84	103.6	103.6	103.1	\$195.02	89.7	\$0.45	110.7	\$0.89	104.1	\$0.89	103.7
1989	1989	\$2.57	103.9	\$23.67	102.2	\$11.65	87.2	100.6	100.6	\$199.41	91.8	\$0.40	97.8	\$0.88	103.5	\$0.88	99.6
1990	1990	\$2.78	112.5	\$23.98	103.5	\$15.09	113.0	104.5	104.5	\$190.86	87.8	\$0.37	90.8	\$0.99	116.0	\$0.99	102.7
1991	1991	\$3.31	133.8	\$26.25	113.3	\$16.03	120.0	114.0	114.0	\$195.43	89.9	\$0.38	93.1	\$0.89	104.4	\$0.89	111.2
1992	1992	\$2.77	112.3	\$26.20	113.1	\$23.82	178.3	119.8	119.8	\$216.87	99.8	\$0.36	87.9	\$0.71	82.8	\$0.71	110.7
1993	1993	\$3.25	131.4	\$27.74	119.7	\$16.75	125.4	121.3	121.3	\$212.43	97.7	\$0.37	90.1	\$0.79	93.0	\$0.79	114.7
1994	1994	\$3.56	144.2	\$28.40	122.6	\$18.78	140.6	124.4	124.4	\$219.94	101.2	\$0.37	89.7	\$0.67	78.8	\$0.67	118.8
1995	1995	\$3.41	138.1	\$30.25	130.5	\$17.82	133.4	130.8	130.8	\$211.29	97.2	\$0.39	94.0	\$0.90	105.5	\$0.90	122.3
1996	1996	\$4.46	180.5	\$32.73	141.3	\$19.22	143.9	141.5	141.5	\$265.98	122.4	\$0.43	105.1	\$1.09	128.5	\$1.09	141.7
1997	1997	\$4.24	171.7	\$32.92	142.1	\$21.39	160.1	143.9	143.9	\$246.29	113.3	\$0.45	110.8	\$1.01	117.9	\$1.01	139.6
1998	98Q1	\$5.30	214.4	\$36.20	156.2	\$30.88	231.2	164.0	164.0	\$292.00	134.4	\$0.48	116.2	(\$1.00)	-1.0	129.9	164.4
1998	98Q2	\$4.76	192.6	\$36.52	157.6	\$24.23	181.4	160.1	160.1	\$264.38	121.7	\$0.48	116.0	(\$1.00)	-1.0	120.3	155.8
1998	98Q3	\$2.69	230.4	\$35.21	141.9	\$34.18	255.9	162.6	162.6	\$295.21	135.8	\$0.22	126.6	(\$1.00)	-1.0	133.6	167.5
1998	98Q4	\$4.33	175.0	\$34.53	149.0	\$28.64	214.4	155.8	155.8	\$291.27	134.0	\$0.51	125.1	(\$1.00)	-1.0	131.9	153.1
1998	98AV	\$4.89	198.0	\$35.72	154.2	\$26.54	198.7	158.7	158.7	\$283.01	130.2	\$0.50	122.0	(\$1.00)	-1.0	128.2	158.1
1999	99Q1	\$5.91	239.4	\$36.57	157.8	\$18.57	139.0	155.9	155.9	\$335.29	154.3	\$0.59	144.9	\$0.54	63.8	134.1	163.5
1999	99Q2	\$5.34	216.0	\$35.09	151.4	\$21.90	163.9	152.7	152.7	\$326.59	150.3	\$0.61	149.8	\$1.15	135.3	147.1	161.8
1999	99Q3	\$4.42	178.8	\$36.62	158.1	\$24.59	184.1	160.7	160.7	\$298.62	137.4	\$0.52	125.5	(\$1.00)	-1.0	107.2	147.7
1999	99Q4	\$4.11	166.5	\$33.96	146.6	\$33.04	247.3	156.9	156.9	\$305.27	140.5	\$0.50	121.1	\$1.46	171.1	143.0	154.3
1999	99AV	\$4.94	199.8	\$35.23	152.0	\$22.78	170.5	153.9	153.9	\$310.56	142.9	\$0.54	132.0	\$1.41	165.3	145.3	159.2
2000	00Q1	\$5.11	206.9	\$36.84	159.0	\$21.73	162.7	159.4	159.4	\$341.22	157.0	\$0.45	110.2	(\$1.00)	-1.0	145.7	164.5
2000	00Q2	\$4.41	178.5	\$40.71	175.7	\$11.84	88.6	166.8	166.8	\$374.75	172.5	\$0.47	114.7	\$1.25	146.2	155.9	165.5
2000	00Q3	\$6.42	259.7	\$43.57	188.0	\$22.69	169.8	186.2	186.2	\$355.44	163.6	\$0.47	114.0	\$0.96	111.9	143.5	185.8
2000	00Q4	\$4.77	193.0	\$38.42	166.0	\$43.65	326.8	182.4	182.4	\$288.39	132.7	\$0.51	123.3	\$1.16	136.3	131.6	168.9
2000	00AV	\$5.25	212.6	\$40.02	173.0	\$20.56	153.9	170.8	170.8	\$346.82	159.6	\$0.47	115.2	\$1.18	138.8	146.8	170.7
2001	01Q1	\$4.14	167.6	\$40.40	175.5	\$37.17	278.2	185.0	185.0	\$311.48	143.3	\$0.51	123.8	\$0.00	0.0	138.6	170.0
2001	01Q2	\$4.78	193.6	\$35.62	154.0	\$13.66	102.3	148.5	148.5	\$282.89	130.2	\$0.50	122.6	\$0.00	0.0	128.3	151.5
2001	01Q3	\$4.29	173.6	\$41.20	177.9	\$20.63	154.5	175.4	175.4	\$297.55	136.9	\$0.50	120.8	\$1.29	151.5	136.8	163.4
2001	01Q4	\$3.13	126.6	\$34.33	147.6	\$47.93	358.8	169.8	169.8	\$335.74	154.5	\$0.45	110.2	\$0.00	0.0	143.7	155.3
2001	01AV	\$4.19	169.5	\$38.67	167.4	\$17.45	130.6	163.2	163.2	\$303.22	139.5	\$0.50	120.9	\$1.29	151.5	138.4	156.8
2002	02Q1	\$6.25	252.9	\$37.53	163.1	\$31.12	233.0	169.3	169.3	\$293.38	135.0	\$0.53	129.6	\$0.00	0.0	133.7	175.4
2002	02Q2	\$5.69	230.3	\$39.67	171.5	\$28.33	212.1	175.4	175.4	\$294.41	135.5	\$0.50	121.3	\$0.70	82.4	121.9	168.6
2002	02Q3	\$4.42	178.8	\$34.98	151.4	\$25.51	190.9	155.1	155.1	\$299.12	137.7	\$0.49	120.5	\$2.11	247.3	156.6	159.6
2002	02Q4	\$2.31	93.3	\$38.71	167.5	\$21.26	159.2	166.2	166.2	\$257.37	118.4	\$0.49	120.7	\$0.81	95.0	114.1	138.1
2002	02AV	\$3.74	151.2	\$37.99	164.7	\$24.81	185.7	166.2	166.2	\$285.35	131.3	\$0.50	121.3	\$0.78	91.9	121.4	150.1
2003	03Q1	\$4.23	171.2	\$36.48	158.2	\$24.92	186.6	160.4	160.4	\$283.25	130.4	\$0.57	137.9	\$0.00	0.0	132.2	155.2
2003	03Q2	\$10.00	404.8	\$40.35	174.9	\$43.68	327.0	189.9	189.9	\$327.84	150.9	\$0.62	151.9	\$0.31	36.3	127.8	183.2

View Annual/Qtr

View Tabular Report

## Colorado Construction Cost Index



### Comments:

This Colorado Construction Cost Index is composed of six indicator items and based on bid prices relative to the unit prices of 1987 (unit index=100).

### Earthwork (Excavation and Embankment):

The average price was \$10.00 a cu. yd. which is up \$5.77 from the previous quarter. The current quarter average price includes many small mountainous projects resulting in significantly higher prices. The previous quarter average price is comparable to the average bid price of \$3.74 a cu. yd. for the entire year 2002.

### Hot Bituminous Pavement:

The average price was \$43.68 a ton which is up \$18.76 from the previous quarter. Small quantities and less competition on asphalt projects bid this quarter led to higher prices. The previous quarter had good competition on large asphalt projects which contributed to a lower bid price.

### Concrete Pavement:

The average price was \$43.68 a sq. yd. which is up \$18.76 from the previous quarter. The current quarter had two large remote bridge projects which resulted in a high average price. The previous quarter average price was comparable to the average bid price of \$24.81 a sq. yd. for the entire year 2002.

### Structural Steel:

The average price was \$0.31 a lb which primarily due to a very competitive bid on a project in Region 5 which was significantly below the average price of \$0.78 for the entire year 2002. There were no structural steel items in the previous quarter.

### Structural Concrete:

The average price was \$327.84 a cu. yd. which is up \$44.59 from the previous quarter. The current quarter had many small specialty bridge projects which resulted in a high average. The previous quarter average price was comparable to the average bid price of \$285.35 a lb. for the entire year 2002.

### Reinforcing Steel:

The average price was \$0.62 a lb which is up \$0.05 a lb from the previous quarter. The higher price is reflective of the smaller projects and less competition during the current quarter.

### ADDITIONAL INFORMATION:

For the 1st quarter, the category indices showing an increase were Earthwork, Hot Bituminous Pavement, Concrete Pavement, Structural Concrete, and Reinforcing Steel. The Index level for structural steel is below the average for 2002.

51 projects were bid and awarded this quarter for a total of \$60,037,939.77. By comparison, 66 projects were bid last quarter. The six categories for CCI items totaled \$25,466,231.54 which is 42.4% of total awarded amount. The competition for projects decreased from 5.41 to 4.57 bidders for each project on average.



14 maintenance contract projects were bid this quarter. No metric projects were bid this quarter.  
No Design/Build or Lump Sum projects were bid this quarter.